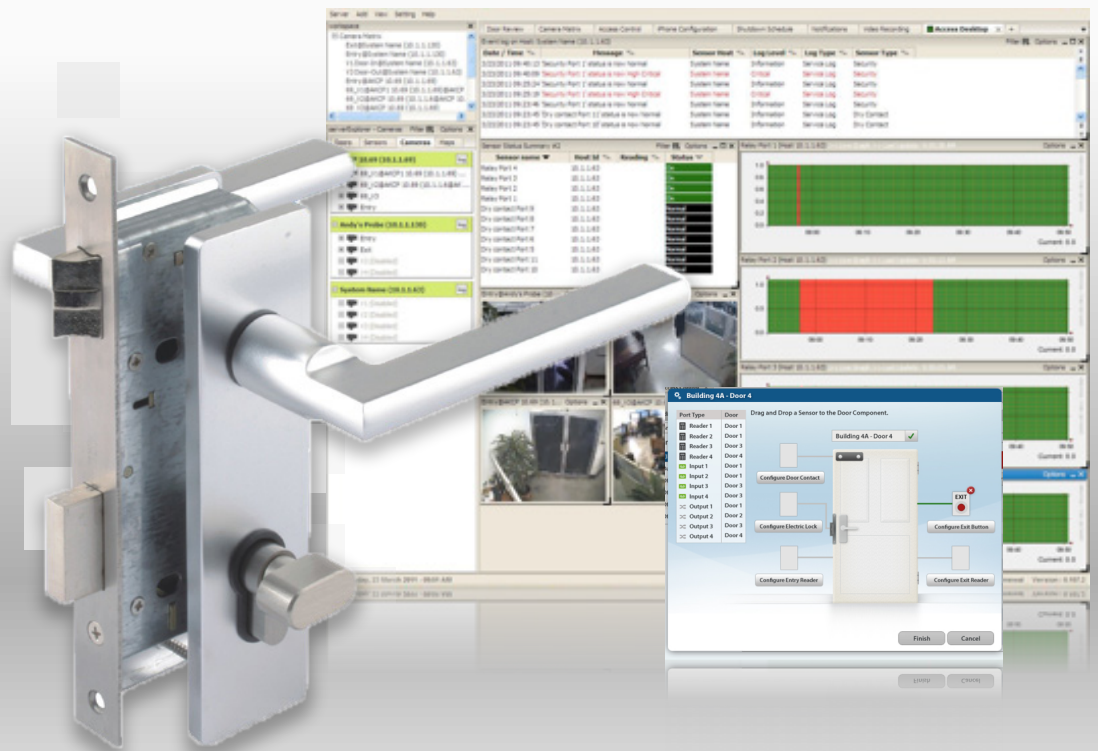






Heavy Duty Electronic Door Lock - ACDL06



Heavy Duty Electronic Door Lock

A high strength heavy duty electronic door lock that is compatible with all our Access Control products. This door lock is manufactured in a traditional cylinder and dead latch configuration and it has a simple design that links to the more advanced AKCess Pro Server application via the Door Control Unit.

The simple design of this electronic door lock ensures that in an emergency the door can be opened using either the handle or the keys supplied.

-  Suitable for: wooden, metal and PVC Doors
-  Made from high strength steel with smooth finish.
-  Emergency manual override handle/lock.
-  Ideal for high traffic sites.

Technical Specifications

Holding Force : up to 1000kg.

Weight : 1Kg

Use in conjunction with ACDL03, ACDL05