

Sensor Control...
Access Control...

securityProbe5ES-X60



securityProbe5ES-X60

securityProbe5SE-X60 will monitor the physical environment and alert you of any disturbances, such as unauthorized intruders, security breaches, high temperatures, smoke, water leakages, power outages and much more.

The securityProbe5E-X60's rich notification suite keeps you up to date 24 hours a day.

Introducing the securityProbe5ES-X60

The securityProbe5ES-X60 is the next generation dry contact device with an advanced 60 dry contact inputs. The securityProbe5ES-X60 has a Linux Operating System with 128 Megabytes of Flash memory and 64 Megabytes of SDRAM.



securityProbe5ES-X60 Monitoring System

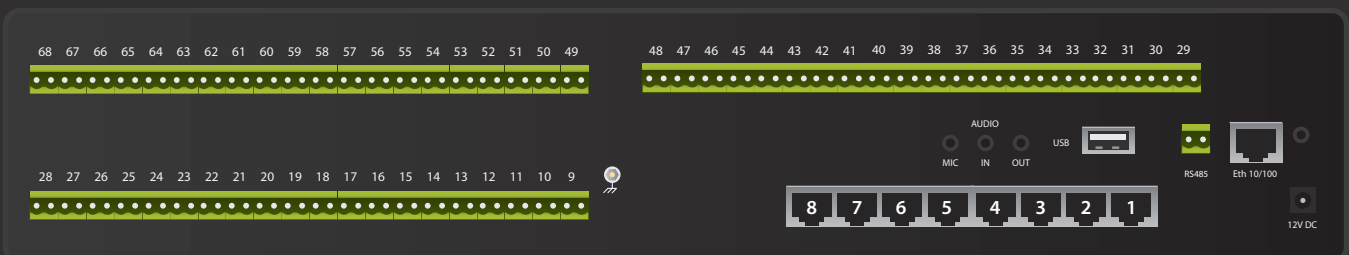
It is TCP/IP compliant and runs lighttpd web server including https (SSL), Bash, Perl, Telnet, PHP, Email and Nagios. The securityProbe5ES-X60 has an easy-to-use web-based user interface for sensor configuration, data collection and extensive graphing.

Complete SNMP functions such as SNMP v3 encryption are supported. The securityProbe5ES-X60 also supports Modbus Master/Slave, Modbus RTU and Modbus over TCP/IP creating a unique, easy to configure Modbus to SNMP gateway. The web-based interface is written in PHP allowing end-user changes such as language translation. The securityProbe5ES-X60 has a battery backed time of day clock for accurate record keeping.

securityProbe5ES-X60's OnBoard Architecture

Up to 8 of AKCP's intelligent sensors can be plugged into the RJ-45 ports of the securityProbe5ES-X60. Once inserted, the sensor automatically configures itself and goes online. Our easy-to-use web based interface allows you to setup the securityProbe5ES-X60 within minutes.

- 8 full autosense RJ-45 ports
- AKCP iMX25 Processor
- 128 Megabytes of NAND Flash
- Onboard SD card slot
- 10/100 Mbps Ethernet and 1 serial port
- 1x USB 2.0 port
- Embedded Linux OS
- RS485 Ports
- Internal Audio Speaker
- 60 Dry contact inputs

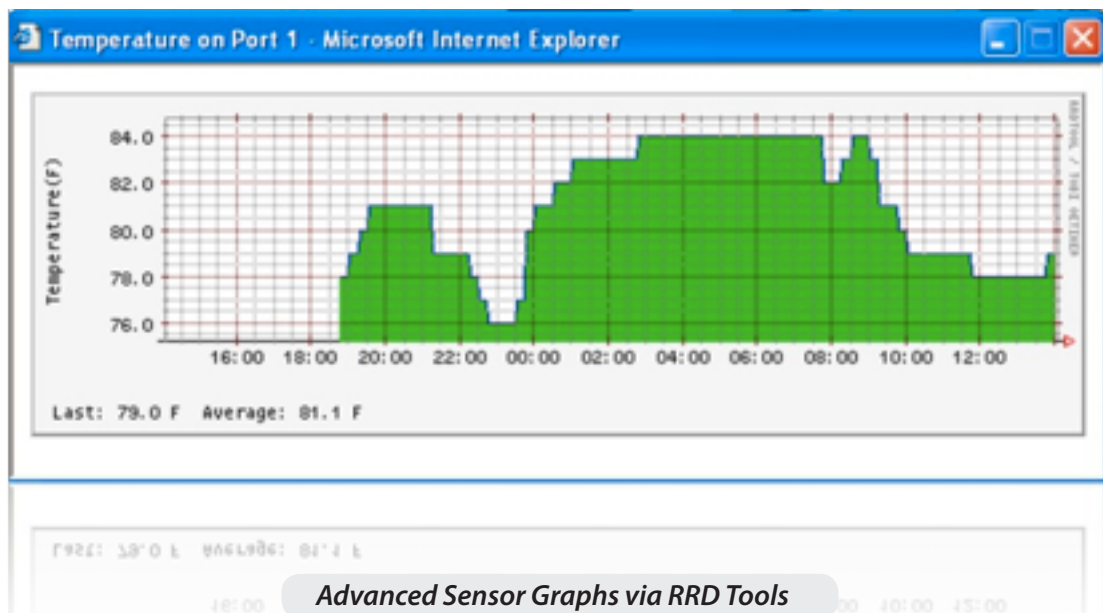


Applications

Sensor Graphing

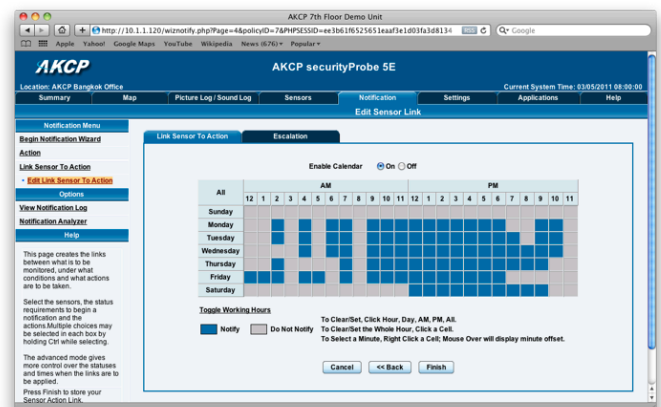
The securityProbe5ES-X60 integrates and displays graphs of all sensor data in its web-based user interface. The individual graph (day, week, month and year) for each sensor type can be customized, simply by modifying the script template used to generate a particular graph. RRD tool is used to build an embedded database of sensor data.

This data can be accessed from the web interface, or downloaded to a remote PC. MRTG can be used to generate real-time graphs of sensor data on a remote website.



False Message Filter

In order to prevent false alarms, the securityProbe5ES-X60 allows extensive filtering of events. You can limit events based on the time of day or the day of the week. You can also limit the number of alerts per hour, so that you are not swamped with many messages. This is especially important with the sensor like the motion detector where you may want to process an event only when the business premises are closed.



securityProbe5ES-X60 Features List

- Embedded web server displays sensor information.
- Receive notifications of anomalous events via email, SMS / MMS, SNMP traps, and many more.
- Integrates with network management systems via SNMPv1 and encrypted SNMPv3.
- Ability to connect external GPRS/GSM modem, Bluetooth and WiFi USB adapters.
- Uses an embedded Linux operating system for maximum stability and flexibility.
- Virtual Sensors Feature to monitor power, Modbus, network devices, and other SNMP based equipment.
- Built-in graphing and data logging, internally or to a remote PC.
- Platform independent; free firmware upgrades and utilities from AKCP.
- Monitor up to 500 intelligent sensors using expansion modules (E-Opto 16 and E-sensor 8)
- Compatible with complete range of AKCP Intelligent sensors
- Full Modbus support : Modbus Master/Slave, Modbus RTU, Modbus over TCP/IP

Industry Certifications & Network Management Systems



AKCP offers NMS Integration for leading network management systems such as:

- AdRem NetCrunch
- IBM Tivoli
- SiteScope
- Quest Software – Big Brother
- Lorient Pro
- Somis WebNM and Denika
- Castle Rock
- Logalot
- WhatsUp Gold
- HP OpenView
- MRTG
- Computer Associates Unicenter TNG

Support and Warranty



- **Full One Year Global Warranty**
- **Unlimited Lifetime Support.**
- **Free Firmware Updates.**
- **Full, Easy to Follow Documentation.**

Technical Specifications

<p>Dimension</p> <p>Size : 18.5" x 5" x 3.45" Weight : 4.4 Pounds</p>	<p>Expansion Ports</p> <p>2x RJ-45 Expansion Ports 115.2K BPS Data Transfer Rate Simultaneous Functionality between Expansion Ports & RS485 Port Threshold Status</p>	<p>Mounting</p> <p>Rack Mount Brackets included Compatible with AKCP's DIN and Rack Mount Trays</p>
<p>Power Requirements</p> <p>Voltage : 7.0 - 9.0 VDC, 3Amp</p>	<p>Status Indication</p> <p>LED Indication for Power LED for Network Connectivity LED for Sensor Online and Threshold Status</p>	<p>Output</p> <p>Ext. Speaker Out, 2.5" Jack (Analog) For Modem Application</p>
<p>Power Consumption</p> <p>Typical 6.150 Watt, 0.82Amp</p>	<p>Operating Environment</p> <p>Temp : Min -35°C - Max +55°C Humidity : Min 20% - Max 80% (Non-Condensing)</p>	<p>Components</p> <p>Manufactured using highly integrated, low power surface mount technology to ensure long term reliability.</p> <p>iMX25 Processor 128 NAND Flash Internal On-Board SD Memory Slot Drive</p>
<p>Inputs</p> <p>8x RJ-45 Sensor Ports 2x RJ-45 Expansion Ports 1x USB Port (Version 2.0) Audio In (Analog) 2.5" Jack RS485, 2 Pin Terminal Box (Used for MODBUS) 60x Dry Contact Inputs</p>	<p>MTBF</p> <p>400,000 Hours</p>	<p>Expansion Boards</p> <p>8 Port Intelligent Sensors Module (E-Sensor 8) 16 Port Dry Contacts Module (E-OPTO16) Extendable up to 1,000 Feet or 300 Meters Expansion modules are daisy chainable.</p>